



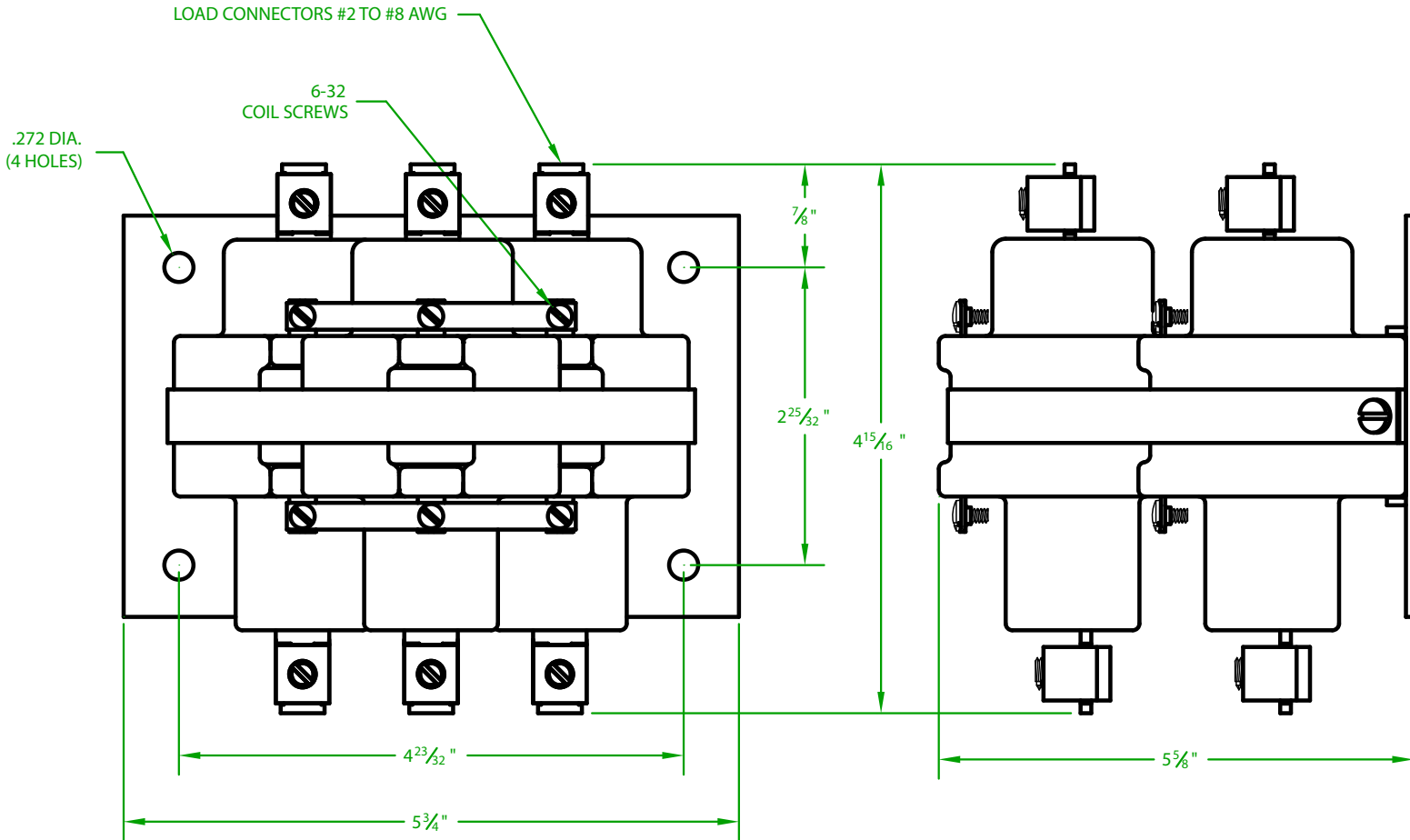
# MERCURY DISPLACEMENT INDUSTRIES, INC.

Post Office Box 710 - U.S. 12 East - Edwardsburg, Michigan 49112-0710

Phone (269) 663-8574 - Fax (269) 663-2924

(800) 634-4077

## 3100NC-120A



- \* CONTACT RESISTANCE .001 ohms
- \* DIELECTRIC WITHSTAND 2,500 VAC RMS
- \* OPERATE TIME 45 MILLISECONDS
- \* RELEASE TIME 60 MILLISECONDS
- \* RATINGS:

CONTACTS: 100 AMPS @ 240 VAC

80 AMPS @ 480 VAC

COIL: 120V 50/60 Hz    CURRENT: 330 mA

RESISTANCE: 127  $\Omega$     VA: 39.6

WATTAGE: 13.8    RESISTIVE OR GENERAL PURPOSE

- \* TEMPERATURE RANGE -35° TO +85° C
- \* COIL TERMINALS #6 BINDING HEAD SCREWS  
TORQUE TO 7 IN-LB
- \* LOAD TERMINALS 2-8 A.W.G. COMPRESSION  
TYPE TORQUE TO 45 IN-LB
- \* 3 POLE / SINGLE THROW
- \* MAGNETICALLY ACTIVATED
- \* MERCURY CONTACTOR

Contactors - Relays - Switches

<http://www.mdius.com>