



MERCURY DISPLACEMENT INDUSTRIES, INC.

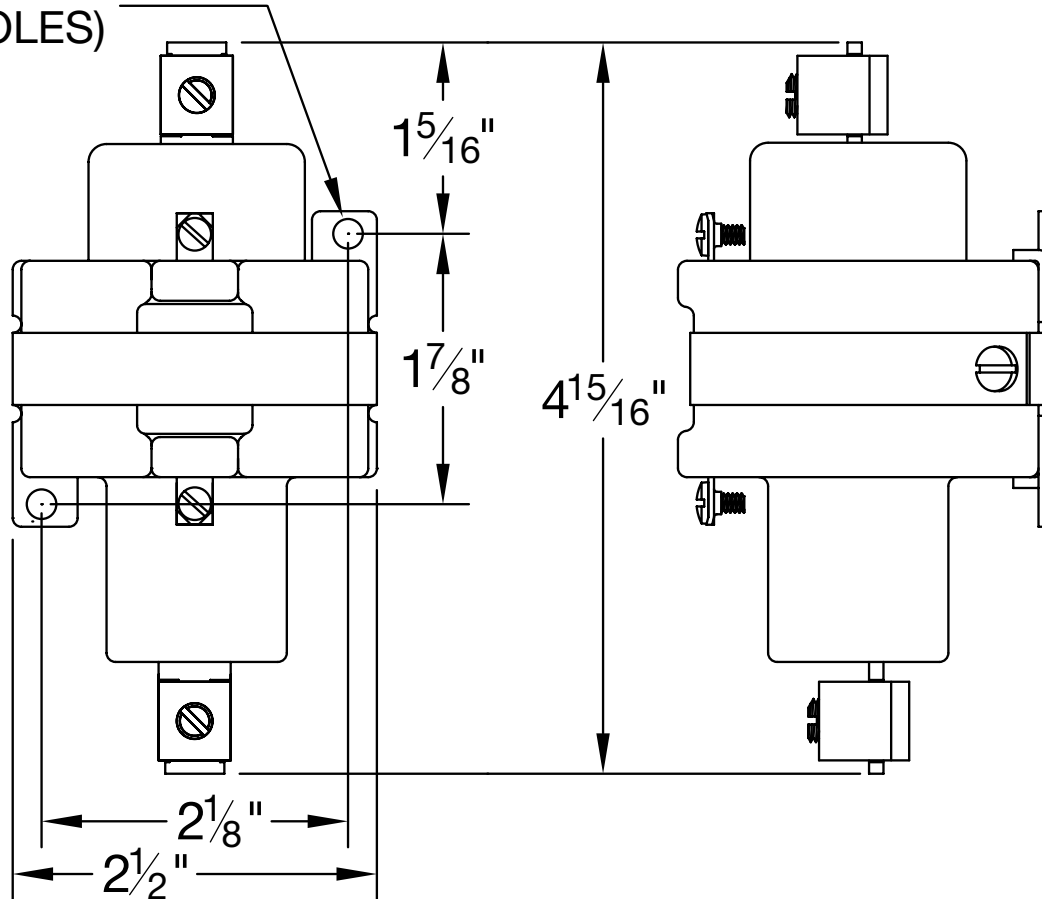
Post Office Box 710 - U.S. 12 East - Edwardsburg, Michigan 49112-0710

Phone (269) 663-8574 - Fax (269) 663-2924

(800) 634-4077

SP-1249-120A

.205" DIA.
(2 HOLES)



- * CONTACT RESISTANCE .001 ohms
- * DIELECTRIC WITHSTAND 8,000 VAC RMS
- * OPERATE TIME 45 MILLISECONDS
- * RELEASE TIME 60 MILLISECONDS
- * RATINGS:
 - CONTACTS: 15 AMPS @ 3500 VAC
 - COIL: 120 V 50/60 HZ CURRENT: 125 mA
 - RESISTANCE: 380 Ω VA: 15.0
 - WATTAGE: 5.9

- * TEMPERATURE RANGE -35° TO +85° C
- * COIL TERMINALS #6 BINDING HEAD SCREWS
TORQUE TO 7 IN-LB
- * LOAD TERMINALS 2-8 A.W.G. COMPRESSION
TYPE TORQUE TO 45 IN-LB
- * SINGLE POLE / SINGLE THROW /
NORMALLY CLOSED
- * MAGNETICALLY ACTIVATED
- * MERCURY CONTACTOR

Contactors - Relays - Switches

<http://www.mdius.com>