



MERCURY DISPLACEMENT INDUSTRIES, INC.

Post Office Box 710 - U.S. 12 East - Edwardsburg, Michigan 49112-0710

Phone (269) 663-8574 - Fax (269) 663-2924

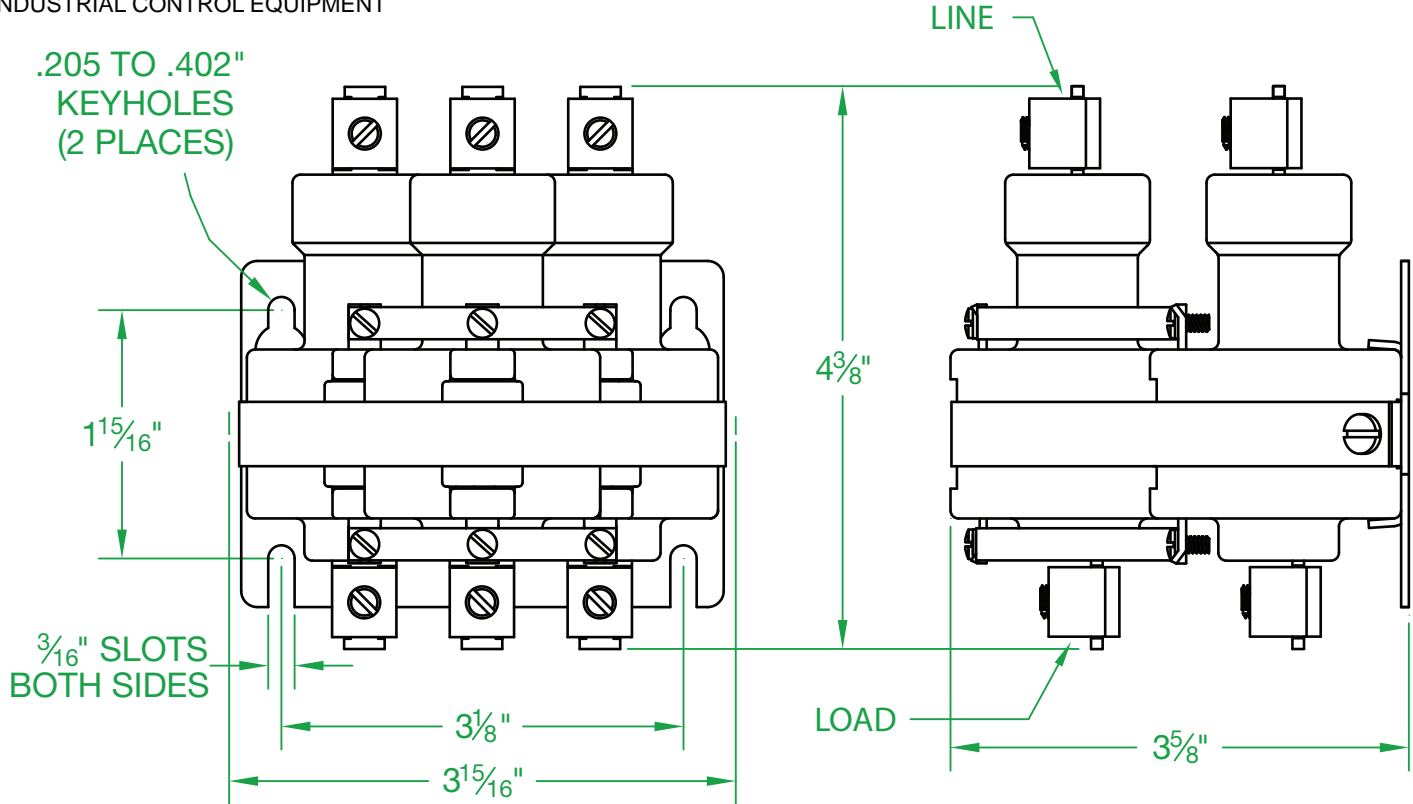
(800) 634-4077



SP-1400-120A

TRAFFIC CONTROL - CONSTANT DUTY

INDUSTRIAL CONTROL EQUIPMENT



* CONTACT RESISTANCE .002 ohms

* TEMPERATURE RANGE -35° TO +85° C

* DIELECTRIC WITHSTAND 2,500 VAC RMS

* COIL TERMINALS #6 BINDING HEAD SCREWS TORQUE TO 7 IN-LB

* OPERATE TIME 50 MILLISECONDS

* LOAD TERMINALS 2-8 A.W.G. COMPRESSION TYPE TORQUE TO 45 IN-LB

* RELEASE TIME 80 MILLISECONDS

* RATINGS:

* RETURN SPRING FOR CONSTANT DUTY

CONTACTS: 60 AMPS @ 480 VAC

* 3 POLE / SINGLE THROW

RESISTIVE OR GEN. PURPOSE

* MAGNETICALLY ACTIVATED

COIL: 120V 50/60 Hz

CURRENT: 144mA

RESISTANCE: 417 Ω

* MERCURY CONTACTOR

VA: 17.4 WATTAGE: 8.7

* LIFE CYCLE ENDURANCE TESTS: U.L. 508 @ 100,00 & CSA 22.2 @ 250,000 CYCLES

Contactors - Relays - Switches

J.J.S. 11-05-09

<http://www.mdious.com>